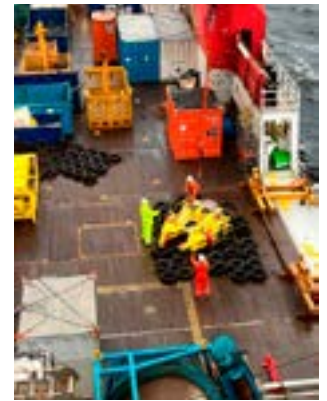
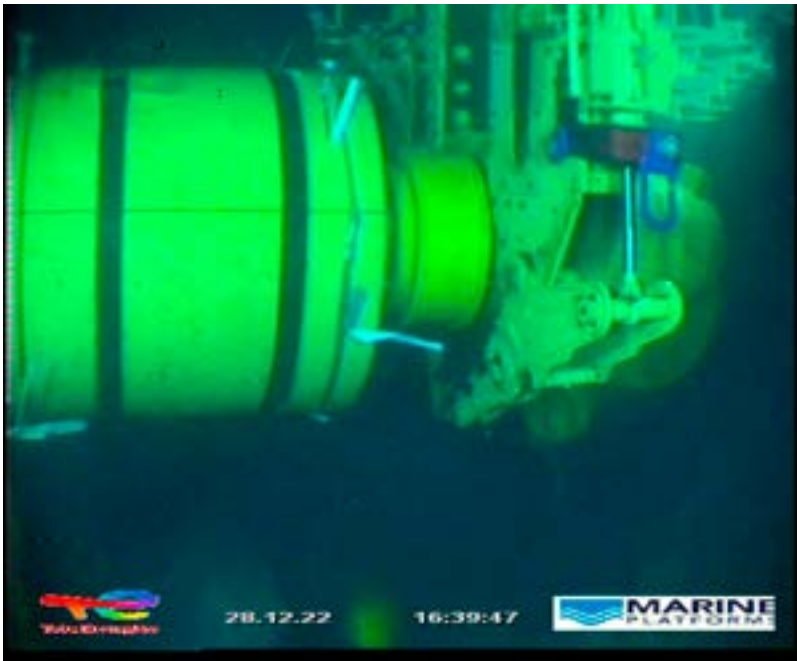


RECENT PROJECT: JUMPER CONNECTOR RECOVERY

Total Energies, Republic of Congo, Gulf of Guinea - West Africa

Decom Engineering provided a C1-24 Chopsaw and remote technical support to complete the cutting operation of a subsea jumper. The work scope included the cutting of the insulated 6" Duplex flowline at each end of the jumper.



PROJECT OVERVIEW

Material	168.3mm Duplex - 14.3mm WT - Insulation OD 608mm
Deployment Method	ROV - Hotstabs
Average Cut Time	1 hour 15 mins
Blade	1 cut per blade
Water Depth	1050m

SOLUTION PROVIDED

Full Equipment and Service Solution

Additional Services

- Hotstab Package
- Independent Clamping System