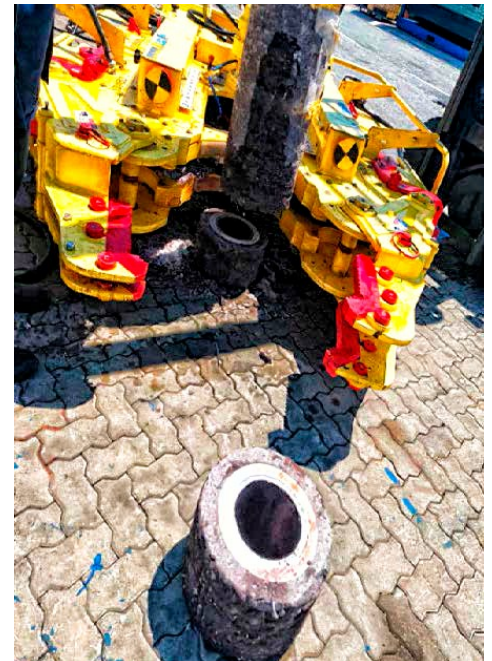
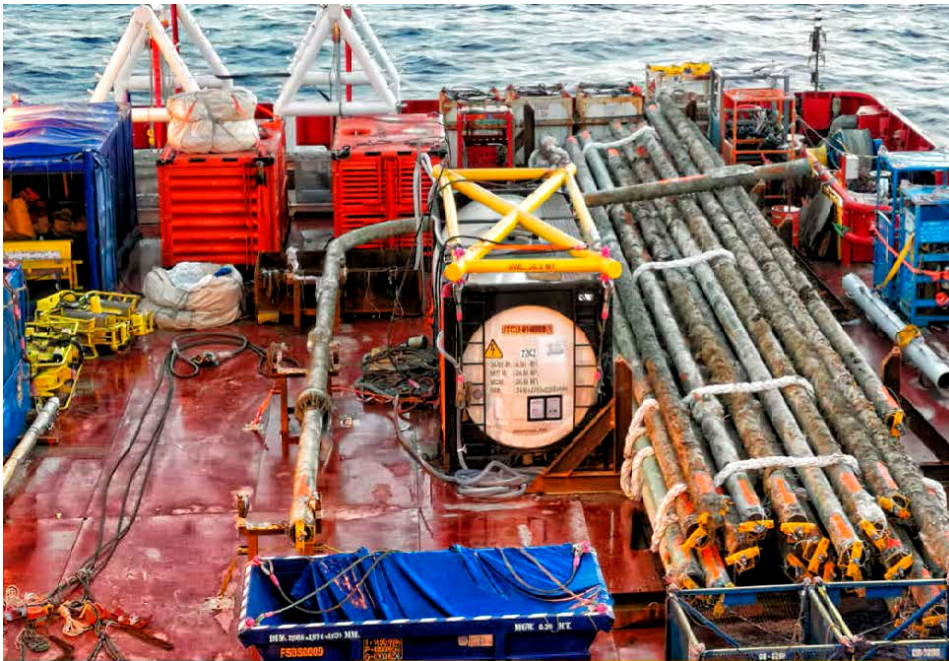


TEST CASE 3: PIPELINE CUT AND LIFT

James Fisher Offshore: Chevron, Erawan field

Decom Engineering supplied 2 x C1-12 and 2 x C1-24 chopperspreads, to multiple large scale pipeline decommissioning phases in the Gulf of Thailand. Applications included 16" CWC pipeline, 18" x70 grade pipelines, at 80m water depth. Over 600 cuts were completed, resulting in an average of 40 cuts per blade.



PROJECT OVERVIEW

Material	16" OD, 1.25" WT, 2"CWC coated gas pipeline, surface laid. 8" OD, .5" WT pipeline
Water Depth	80m - 100m
Deployment Method	Crane deployed, powered topside
Average Cut Time	16" - 12 cuts: avg cut time 27 mins; 10" - 8 cuts: avg cut time 15 mins; 16" - 1" concrete coated with rebar: avg cut time 30 mins
Blade	Averaging 40 cuts per blade

SOLUTION PROVIDED

Full Equipment and Service Solution

Additional Services

- Project management
- In-house technicians
- 24/7 technical support
- Logistics management