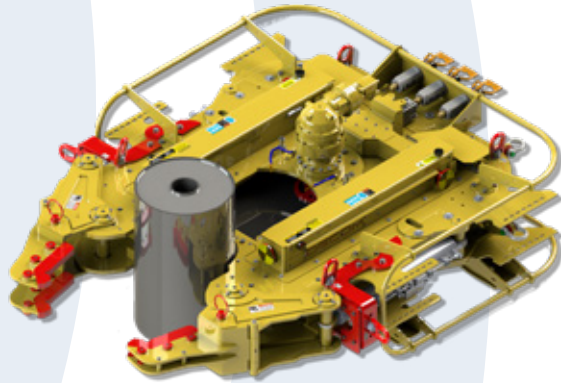




INNOVATIVE DECOMMISSIONING SOLUTIONS





DECOM ENGINEERING WAS FORMED IN 2011, SPECIALISING IN THE DESIGN AND FABRICATION OF OUR PATENTED CUTTING SOLUTIONS.

Over the last number of years we have worked on many different projects which has enabled us to expand our product range and service offering.

Decom Engineering is an R&D led firm providing innovative decommissioning equipment.





C1 CHOPSAW RANGE

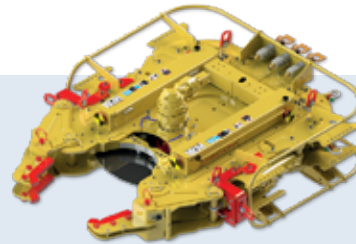
**OFF-SHORE
& ON-SHORE**

[TECHNICAL OVERVIEW](#) / [RANGE OVERVIEW](#) /
[RECENT TRACK RECORD](#) / [ONGOING R&D](#)



THE C1 ADVANTAGE

- ✓ Fully certified to 2,000m depth
- ✓ Robust shipping & spares cage
- ✓ Buoyancy options
- ✓ Hot stab integration
- ✓ Blade reverse capability
- ✓ Self clamping
- ✓ Wide variety of applications
- ✓ Bespoke customisation




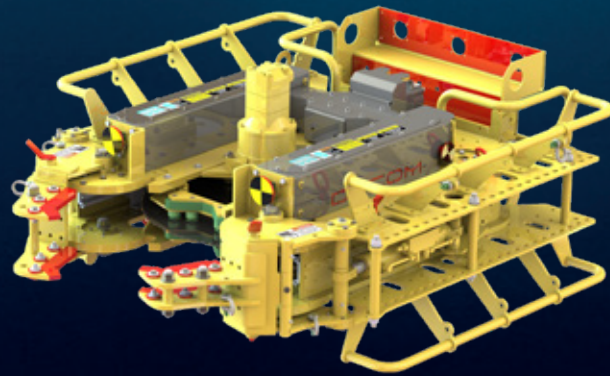
C1 SAW

KEY BENEFITS

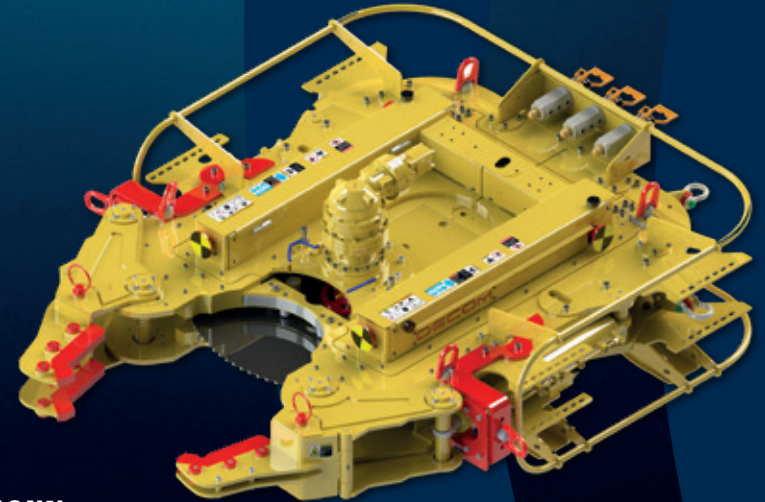
DIAMOND WIRE SAWS

STANDARD FEATURES

Price	 LOW consumable cost: less time, more cuts and less waste	 INCREASED consumable cost: more time, less cuts and more waste
Safety	 LOW operational hazard	 INCREASED operational hazard
Versatility	 metal / concrete / umbilicals / risers / mud baseline / 4-20 with no tooling change	 LIMITED cutting capabilities across material range
Efficiency	 20 - 70 CUTS in 8 - 12 minutes	 FEWER CUTS in 8 - 12 minutes



C112 SAW



C124 SAW

C1 SAW RANGE OVERVIEW



C112

2"-12" OD



C116

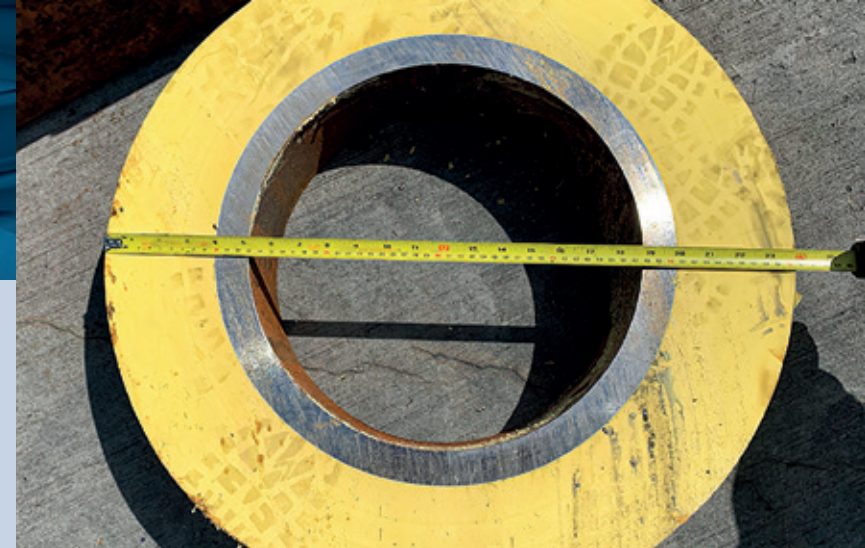
2"-16" OD



C124

2"-24" OD

RECENT TRACK RECORD

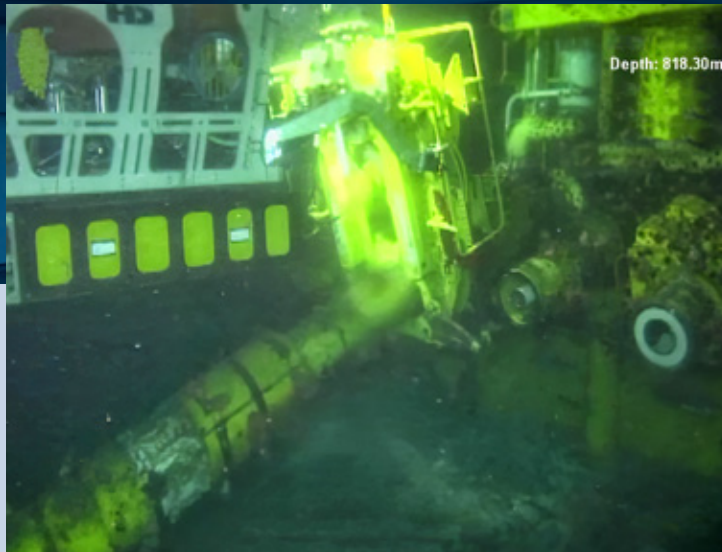


SHELL PENGUINS FIELD SUBSEA 7

PROJECT OVERVIEW

Material	<ul style="list-style-type: none">• 16" OD Production spool• 29mm Duplex WT• SPU coating
Depth	170m water depth

RECENT TRACK RECORD

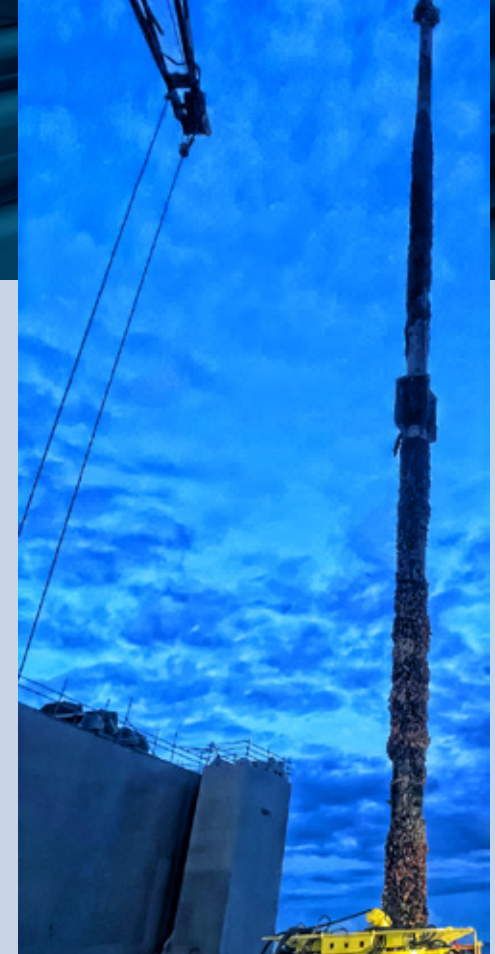


PETRONAS MAURITANIA

PROJECT OVERVIEW

Material	<ul style="list-style-type: none">• 84mm R4 studless chain• 20" Termination heads• Duplex inner• HDPU filler
Depth	800m water depth

RECENT TRACK RECORD



ALL SEAS GYDA PLATFORM

PROJECT OVERVIEW

Material

- 20" multi string loose conductors
- 20" x 0.625"
- 13" 3/8 x 0.48"
- 9" 5/8 x 0.545"

RECENT TRACK RECORD



CHEVRON/ PTTEP THAILAND

PROJECT OVERVIEW

Material

- 16" CWC gas pipeline
- 15mm - 25mm WT
- 38mm CWC

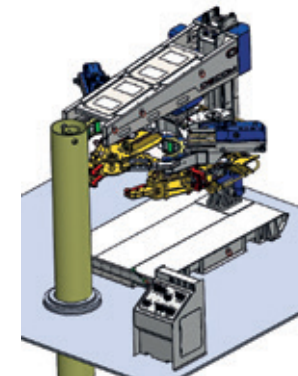
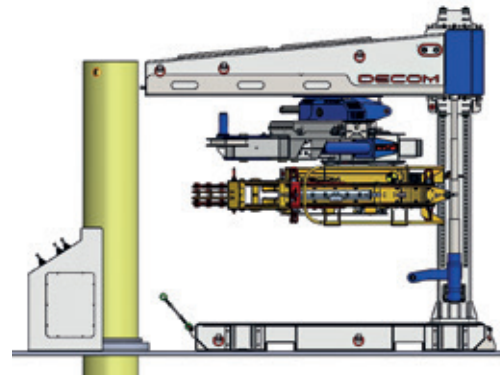
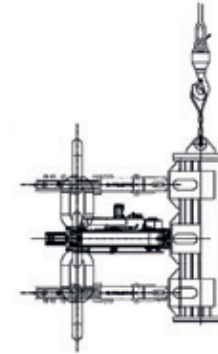
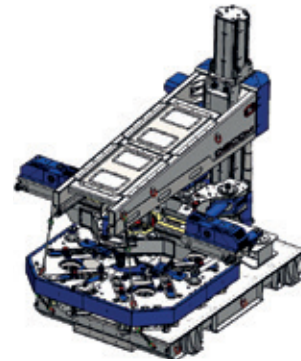
Depth

40-70m water depth

ONGOING R&D

Examples of R&D include:

- ✓ Drilling and pinning attachment unit
- ✓ Heavy load safe release unit
- ✓ Aluminum integration for a lighter unit
- ✓ Camera integration
- ✓ Integrated buoyance modules



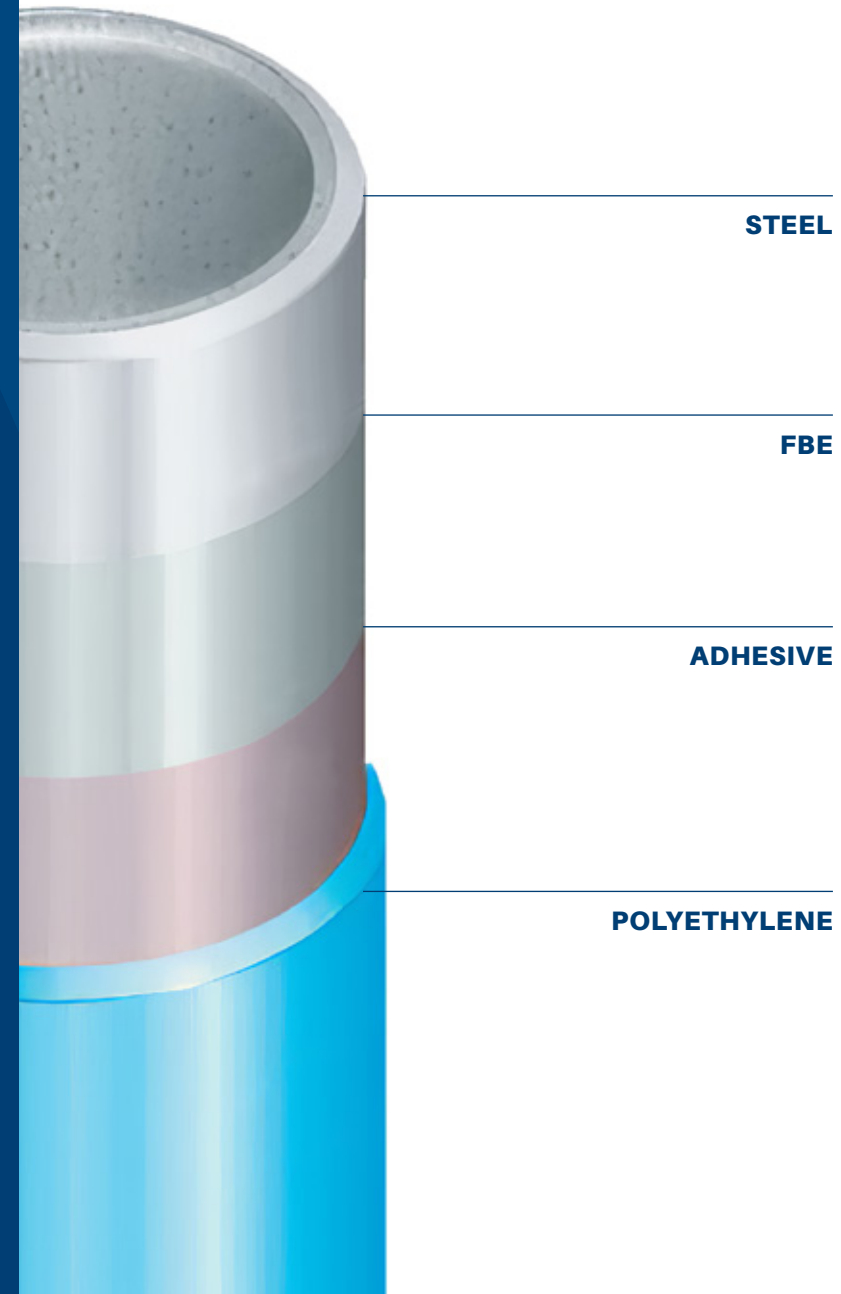
PIPE COATING REMOVAL SYSTEM

- Fastest and most environmentally friendly process on the market globally
- Our equipment removes multiple coating types (FBE/PE, adhesive, tar/bitumen)
- Waste is collected and disposed of using on-board dust extraction and collection conveyors. The pipe surface is left 100% clean of all coatings

UNLOCKING COATED OIL & GAS TUBULARS FOR REUSE

To unlock the value of the steel pipe,
we must remove three layers of coating:

- ✓ Fusion bonded epoxy
- ✓ Adhesive
- ✓ Polyethylene



THE CRM ADVANTAGE



CRM

PIPE COATING REMOVAL MACHINE
KEY BENEFITS

TRADITIONAL METHODS

STANDARD FEATURES AND PROCESSES

Price



FASTEST machine
on the market globally



SLOW
and costly

Versatility



Can remove all three layers of coating
FBE Adhesive and Polyethylene



Increased risk
of pipe damage

Waste
Efficiency



- 100% waste capture
- Recycles 100% of pipe into usable product
- Cleans emissions to medical grade air / no unnecessary fumes



- Heat use
- Operator hazards
- Emissions

STEP 1 LOADING



**THE PIPE IS LOADED
ONTO V-BLOCKS USING
A FORKLIFT**

**THE V-BLOCKS ARE THEN
LOWERED TO PLACE THE
PIPE ONTO ROTATORS**

STEP 2 SECURE AND CUT



**THE PIPE IS SECURED USING
END RESTRAINTS TO
PREVENT PIPE FLOAT**

**WE MAKE A LONGITUDINAL CUT
ALONG THE LENGTH OF THE PIPE
TO ENABLE EASY WASTE CAPTURE**

STEP 3 WASTE CAPTURE



...which is collected for reuse in the manufacture of HDPP and HDPE products.



Dust extractor captures particles created in FBE removal

THE PE COATINGS ARE CAPTURED FOR RECYCLING INTO THE MANUFACTURE OF HDPP AND HDPE PRODUCTS

THE FBE IS CAPTURED USING A STATE OF THE ART DUST CAPTURE MACHINE: THIS CAN BE SAFELY DISPOSED OF AND EVEN UTILISED AS A FURNACE FEED

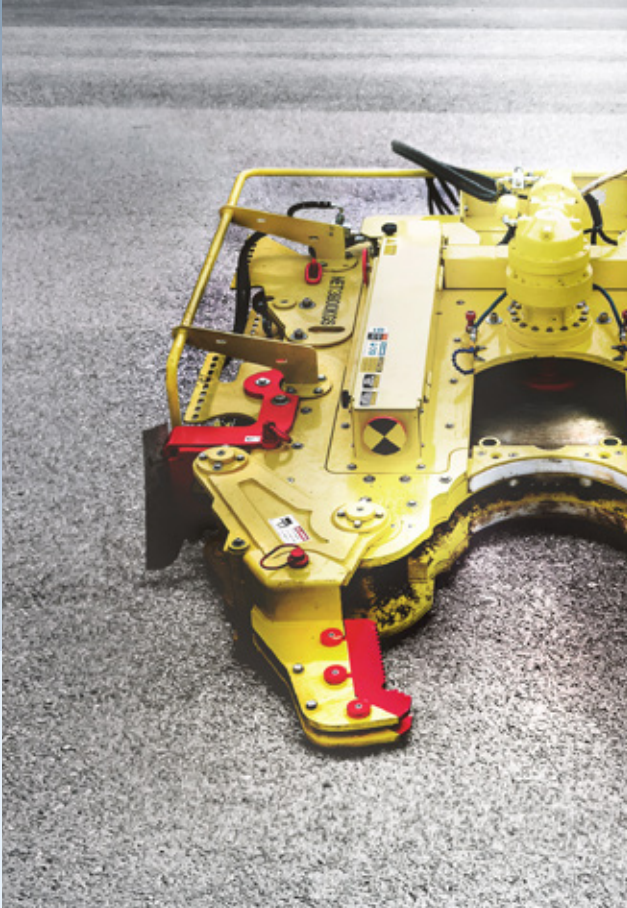
STEP 4

PROCESS COMPLETE



**THE PIPE IS UNLOADED, CLEAN
OF ALL VISIBLE COATINGS**

Contact Details



GET IN TOUCH

e.info@decomengineering.com

t. +44 2890 394316

SEAN CONWAY

MD & Founder

sean@decomengineering.com

NICK MCNALLY

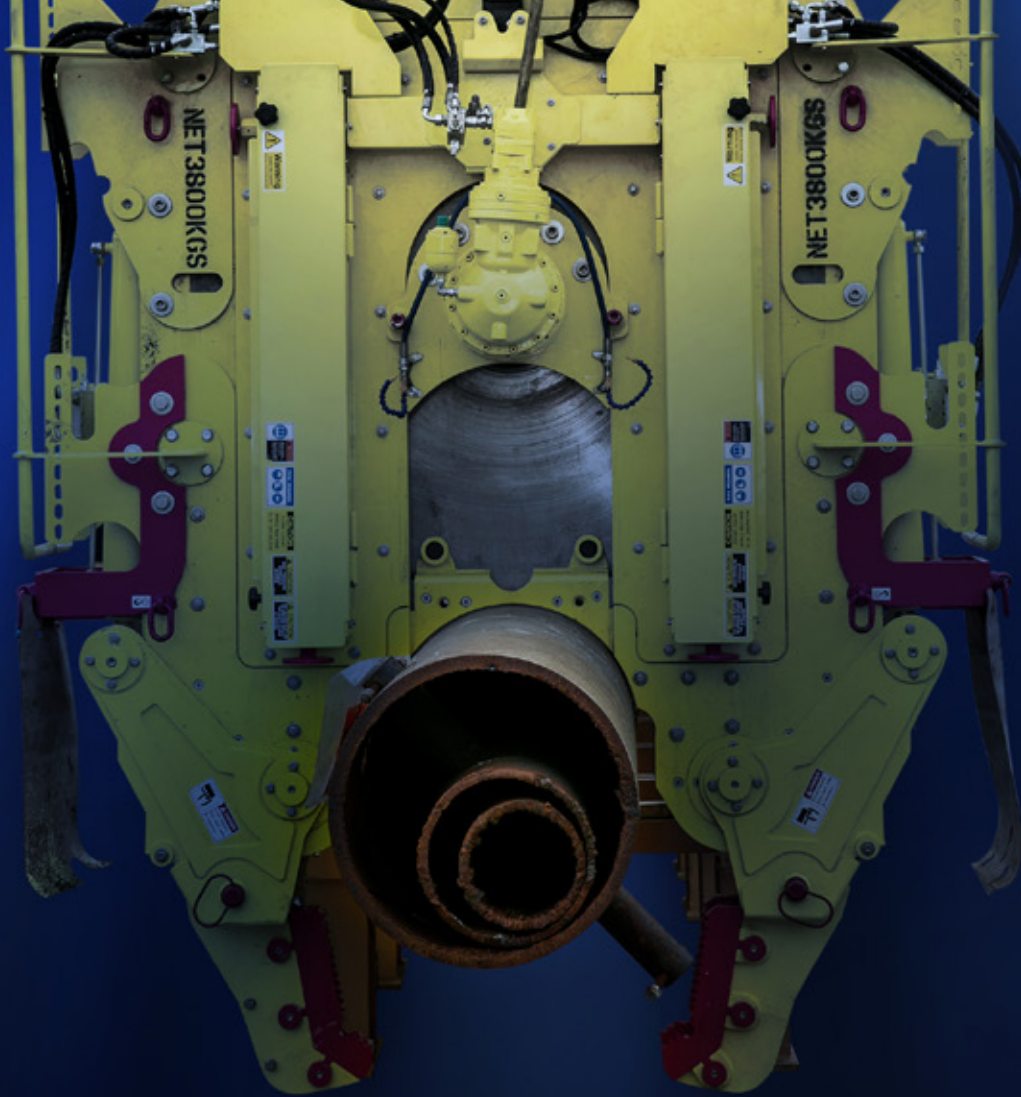
Commercial Director

nick@decomengineering.com

MATTHEW DRUMM

Business Development Manager

matthew@decomengineering.com



SCOTLAND

Warehouse 4, Potterton,
Aberdeen AB23 8UY

NORTHERN IRELAND

55 Mullan Road, Cookstown
Co. Tyrone BT80 0JE



**FASTER.
SAFER.
STRONGER.**

INNOVATIVE DECOMMISSIONING SOLUTIONS.



www.decomengineering.co.uk
info@decomengineering.com